

Test Report

Report No.:SZR10031801152

Page 1 of 4

Applicant :FULIYUAN PACKING MATERIAL (SHEN ZHEN) CO., LTD

Address :LI YU INDUSTRIAL AN GONG MING LOU CUN SHEN ZHEN

Report on the submitted sample(s) said to be:

Sample Name :珍珠棉黑色
Sample Description :Black pearl cotton
Material :LDPE
Sample Received Date :Mar. 18, 2010
Testing Period :Mar. 18, 2010 to Mar. 22, 2010

Test Requested :As specified by client, to determine the Lead, Cadmium, Mercury, Hexavalent Chromium, PBBs&PBDEs content in the submitted sample.

Test Method :

Tested Item(s)	Test Method	Measured Equipment(s)	MDL
Lead (Pb)	IEC 62321:2008 Ed.1 Sec.8	ICP-OES	2 mg/kg
Cadmium (Cd)	IEC 62321:2008 Ed.1 Sec.8	ICP-OES	2 mg/kg
Mercury(Hg)	IEC 62321:2008 Ed.1 Sec.7	ICP-OES	2 mg/kg
Hexavalent Chromium (Cr(VI))	IEC 62321:2008 Ed.1 Annex C	UV-Vis	2 mg/kg
Polybrominated Biphenyls (PBBs)	IEC 62321:2008 Ed.1 Annex A	GC-MS	5 mg/kg
Polybrominated Diphenyl Ethers (PBDEs)	IEC 62321:2008 Ed.1 Annex A	GC-MS	5 mg/kg

Test Result(s): Please refer to the following page(s).

Tested by



Technical Manager

Inspected by



Approved by

Date

Mar. 22, 2010

Test Report

Report No.:SZR10031801152

Page 2 of 4

Test Result(s):

Tested Item(s)	Content
Lead (Pb)	49 mg/kg
Cadmium (Cd)	N.D.
Mercury (Hg)	N.D.
Hexavalent Chromium (Cr(VI))	N.D.

Tested Item(s)	Content
Polybrominated Biphenyls(PBBs)	
Monobromobiphenyl	N.D.
Dibromobiphenyl	N.D.
Tribromobiphenyl	N.D.
Tetrabromobiphenyl	N.D.
Pentabromobiphenyl	N.D.
Hexabromobiphenyl	N.D.
Heptabromobiphenyl	N.D.
Octabromobiphenyl	N.D.
Nonabromobiphenyl	N.D.
Decabromobiphenyl	N.D.
Polybrominated Diphenyl Ethers(PBDEs)	
Monobromodiphenyl ether	N.D.
Dibromodiphenyl ether	N.D.
Tribromodiphenyl ether	N.D.
Tetrabromodiphenyl ether	N.D.
Pentabromodiphenyl ether	N.D.
Hexabromodiphenyl ether	N.D.
Heptabromodiphenyl ether	N.D.
Octabromodiphenyl ether	N.D.
Nonabromodiphenyl ether	N.D.
Decabromodiphenyl ether	N.D.

Note:

- MDL = Method Detection Limit
- N.D. = Not Detected (<MDL)
- mg/kg = ppm = parts per million

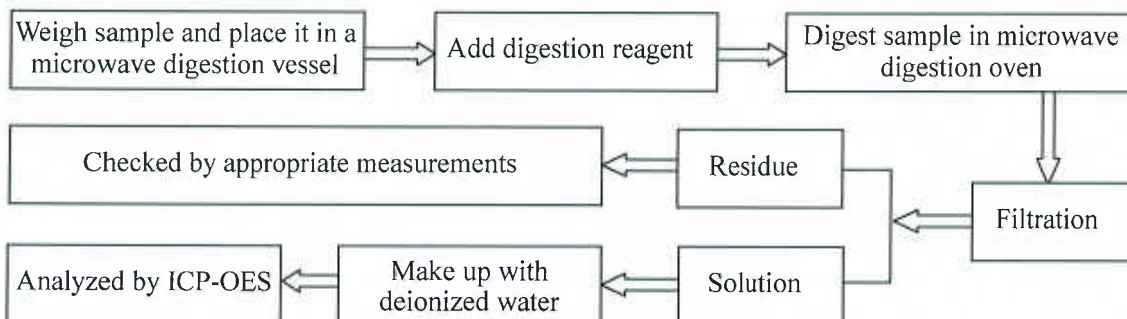
Test Report

Report No.:SZR10031801152

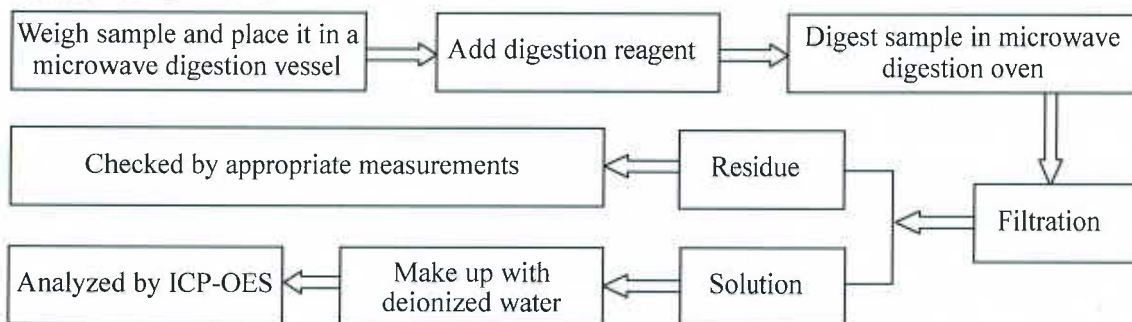
Page 3 of 4

Test Process :

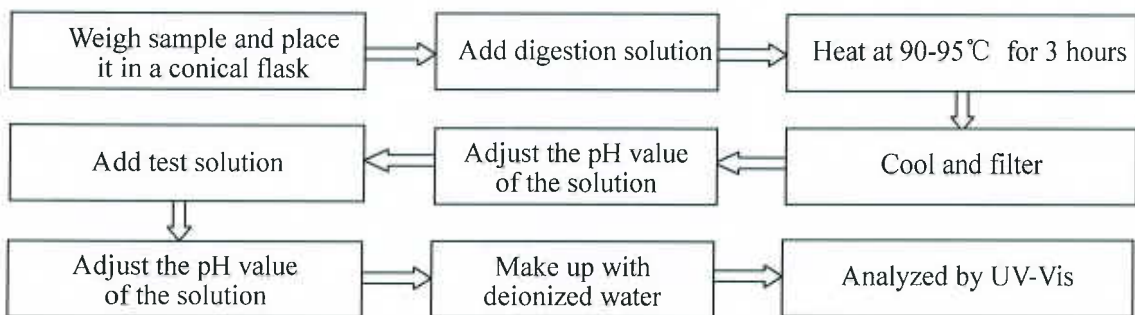
1. Test for Pb/Cd Content



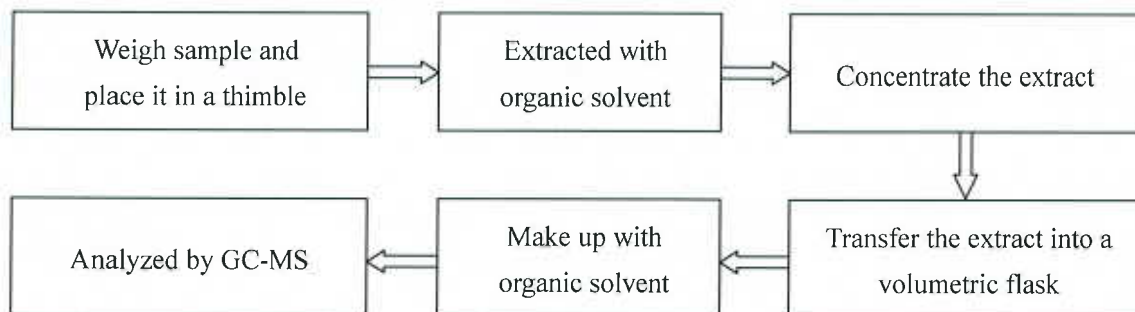
2. Test for Hg Content



3. Test for Chromium(VI) Content



4. Test for PBBs /PBDEs Content



Test Report

Report No.:SZR10031801152

Page 4 of 4

Photo(s) of the sample(s)



*** End of report ***

This report is considered invalidated without the Special Seal for Inspection of the CTI. This report shall not be altered, increased or deleted. The results shown in this test report refer only to the sample(s) tested. Without written approval of CTI, this test report shall not be copied except in full and published as advertisement.

Building C, Hongwei Industrial Zone, Baoan 70 District, Shenzhen